

19604 67TH AVE NE ARLINGTON, WA 98223
(360) 435-5531 WWW.CUZCONCRETE.COM

CONFORMS TO:

- WASHINGTON STATE APWA/WSDOT (STANDARD SPECIFICATIONS)
- MEETS H-20 REQUIREMENTS
- ASTM C478 MANHOLES
- ASTM C443 RUBBER GASKET JOINTS
- ASTM C-33 AND C-150 28 DAY COMPRESSIVE STRENGTH F'C = 4000PSI

REINFORCING:

- TOP SLAB #5 DEFORMED REBAR AROUND OPENING DIAGONALLY ON BOTH SIDES OF OPENING AT 6" O.C. IN BOTH DIRECTIONS
- CIRCUMFERENTIAL WALL: MINIMUM 0.18 SQ. IN./LINEAR FT.
- BASE: 0.35 SQ. IN./LINEAR FT. IN BOTH DIRECTIONS; MINIMUM YIELD STRENGTH = 60,000PSI

HOLE DIMENSIONS

- STANDARD BASE: BANK-CORE DRILL AS NEEDED PER CUSTOMER REQUIREMENTS
- MAXIMUM HOLE DIAMETER IS 60"
- 12" MINIMUM DISTANCE BETWEEN HOLES

STRUCTURE DIMENSIONS

- INSIDE DIAMETER: 72"
- OUTSIDE DIAMETER: 86"
- WALL THICKNESS: 7"
- BASE THICKNESS: 11"

STEPS AND LADDERS

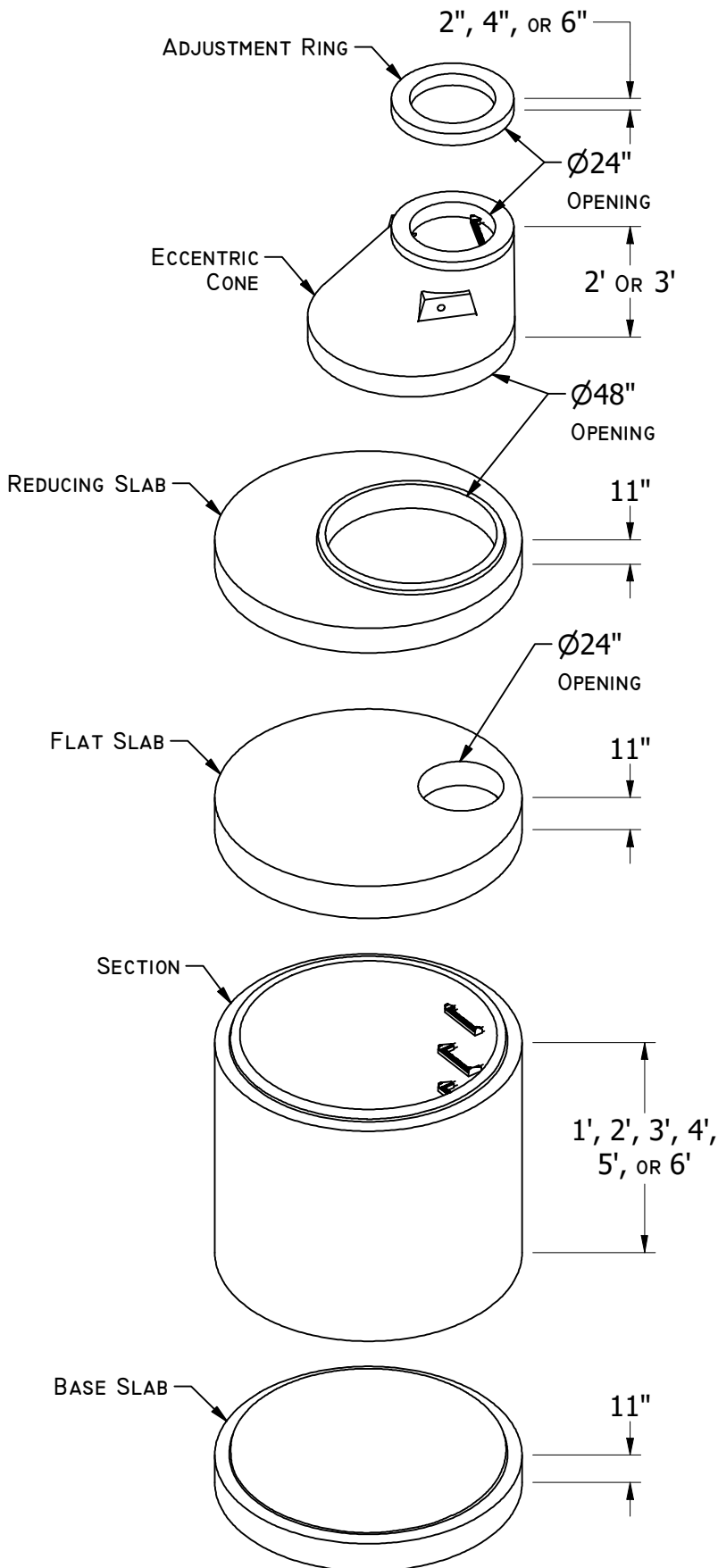
- MEET ASTM C478
- STEPS PLACED VERTICALLY 12" O.C.
- LADDER PROVIDED WITH BASE

WEIGHTS

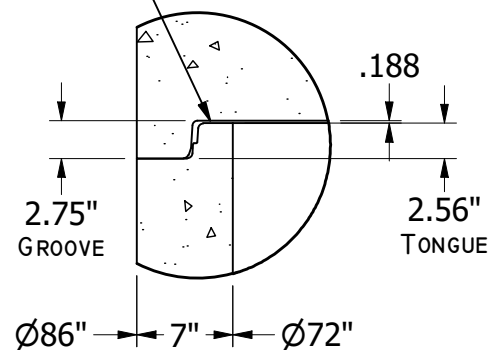
- BASE SLAB: 5800 LB
- 72" SECTIONS: 1800 LB/FT
- FLAT SLAB: 4100 LB
- REDUCING SLAB: 2300 LB
- 48" X 2' ECC. CONE: 1360 LB
- 48" X 3' ECC. CONE: 2200 LB
- 24" ADJUSTMENT RISER: 80LB PER 2 INCHES
- OPTIONAL 5-WAY K.O.: SUBTRACT 3750 LBS FROM TOTAL WEIGHT

OPTIONS

- KOR-N-SEAL RUBBER BOOTS
- PRE-CHANNELED BASES
- COATINGS PER DISTRICT REQUIREMENTS



GASKET TO COMPRESS OVER LEDGE
PROVIDING WATERTIGHT SEAL



JOINT DETAIL