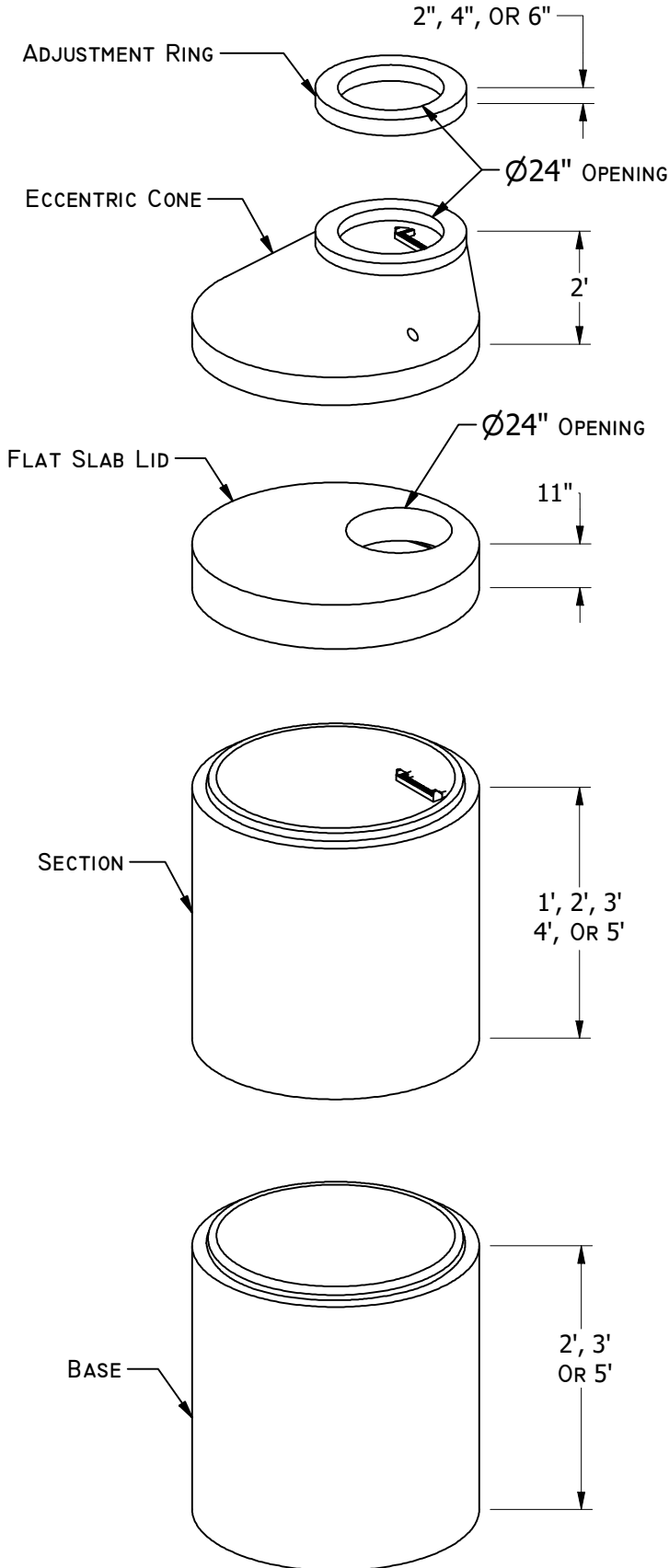


19604 67TH AVE NE ARLINGTON, WA 98223
(360) 435-5531 WWW.CUZCONCRETE.COM



CONFORMS TO:

- WASHINGTON STATE APWA/WSDOT (STANDARD SPECIFICATIONS)
- MEETS H-20 REQUIREMENTS
- ASTM C478 MANHOLES
- ASTM C443 RUBBER GASKET JOINTS
- ASTM C-33 AND C-150 28 DAY COMPRESSIVE STRENGTH F'C = 4000PSI

REINFORCING:

- TOP SLAB #4 DEFORMED REBAR AROUND OPENING DIAGONALLY ON BOTH SIDES OF OPENING AT 6" O.C. IN BOTH DIRECTIONS
- CIRCUMFERENTIAL WALL: MINIMUM 0.135 SQ.IN./LINEAR FT.
- BASE: 0.19 SQ.IN./LINEAR FT. IN BOTH DIRECTIONS; MINIMUM YIELD STRENGTH = 60,000PSI
- REBAR: ASTM A-615 GRADE 60
- MESH: ASTM A-185 GRADE 88

HOLE OR KNOCKOUT DIMENSIONS

- STANDARD BASE: BANK-CORE DRILL AS NEEDED PER CUSTOMER REQUIREMENTS
- OPTIONAL BASE W/ 4-WAY KNOCKOUTS PROVIDED
- MAXIMUM HOLE DIAMETER IS 42"
- 8" MINIMUM DISTANCE BETWEEN HOLES
- 2" DIA LIFTING HOLES PROVIDED

STRUCTURE DIMENSIONS

- INSIDE DIAMETER: 54"
- OUTSIDE DIAMETER: 65"
- WALL THICKNESS: 5 1/2"
- BASE THICKNESS: 8"

STEPS AND LADDERS

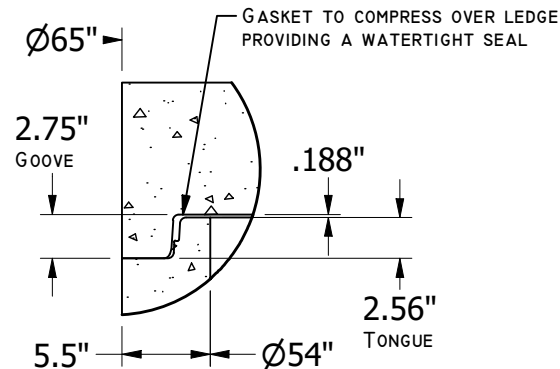
- MEET ASTM C478
- STEPS PLACED VERTICALLY 12" O.C.
- LADDER PROVIDED WITH BASE
- GU LINERS

WEIGHTS

- 54" x 2' BASE: 3400 LB
ADDITIONAL FOOTAGE: 1100 LB/FT
- 54" SECTIONS: 1100 LB/FT
- FLAT SLAB LID: 2200 LB
- 54" x 2' ECC. CONE: 1700 LB
- 24" ADJUSTMENT RING: 80LB PER 2INCHES

OPTIONS

- KOR-N-SEAL RUBBER BOOTS
- PRE-CHANNELED BASES
- COATINGS PER DISTRICT REQUIREMENTS



JOINT DETAIL