

19604 67TH AVE NE ARLINGTON, WA 98223
(360) 435-5531 WWW.CUZCONCRETE.COM

CONFORMS TO:

- WASHINGTON STATE APWA/WSDOT (STANDARD SPECIFICATIONS)
- MEETS H-20 REQUIREMENTS
- ASTM C478 MANHOLES
- ASTM C443 RUBBER GASKET JOINTS
- ASTM C-33 AND C-150 28 DAY COMPRESSIVE STRENGTH $F'c = 4000\text{PSI}$

REINFORCING:

- TOP SLAB #4 DEFORMED REBAR AROUND OPENING DIAGONALLY ON BOTH SIDES OF OPENING AT 6" O.C. IN BOTH DIRECTIONS
- CIRCUMFERENTIAL WALL: MINIMUM 0.12 SQ.IN./LINEAR FT.
- BASE: 0.15 SQ.IN./LINEAR FT. IN BOTH DIRECTIONS; MINIMUM YIELD STRENGTH = 60,000PSI

HOLE OR KNOCKOUT DIMENSIONS

- STANDARD BASE: BANK-CORE DRILL AS NEEDED PER CUSTOMER REQUIREMENTS
- OPTIONAL BASE 4-WAY KNOCKOUTS PROVIDED: 30" K.O.
- FOR 4' BASE & 36" K.O. FOR 5' BASE
- MAXIMUM HOLE DIAMETER IS 36"
- 8" MINIMUM DISTANCE BETWEEN HOLES
- 2" DIA LIFTING HOLES PROVIDED

STRUCTURE DIMENSIONS

- INSIDE DIAMETER: 48"
- OUTSIDE DIAMETER: 58"
- WALL THICKNESS: 5"
- BOTTOM THICKNESS: 6"

STEPS AND LADDERS

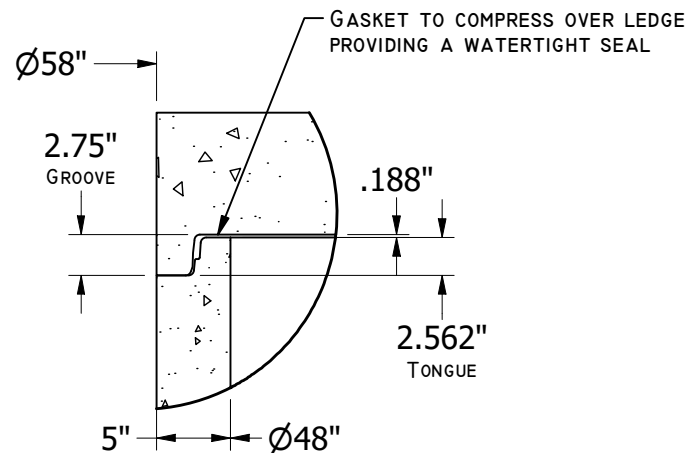
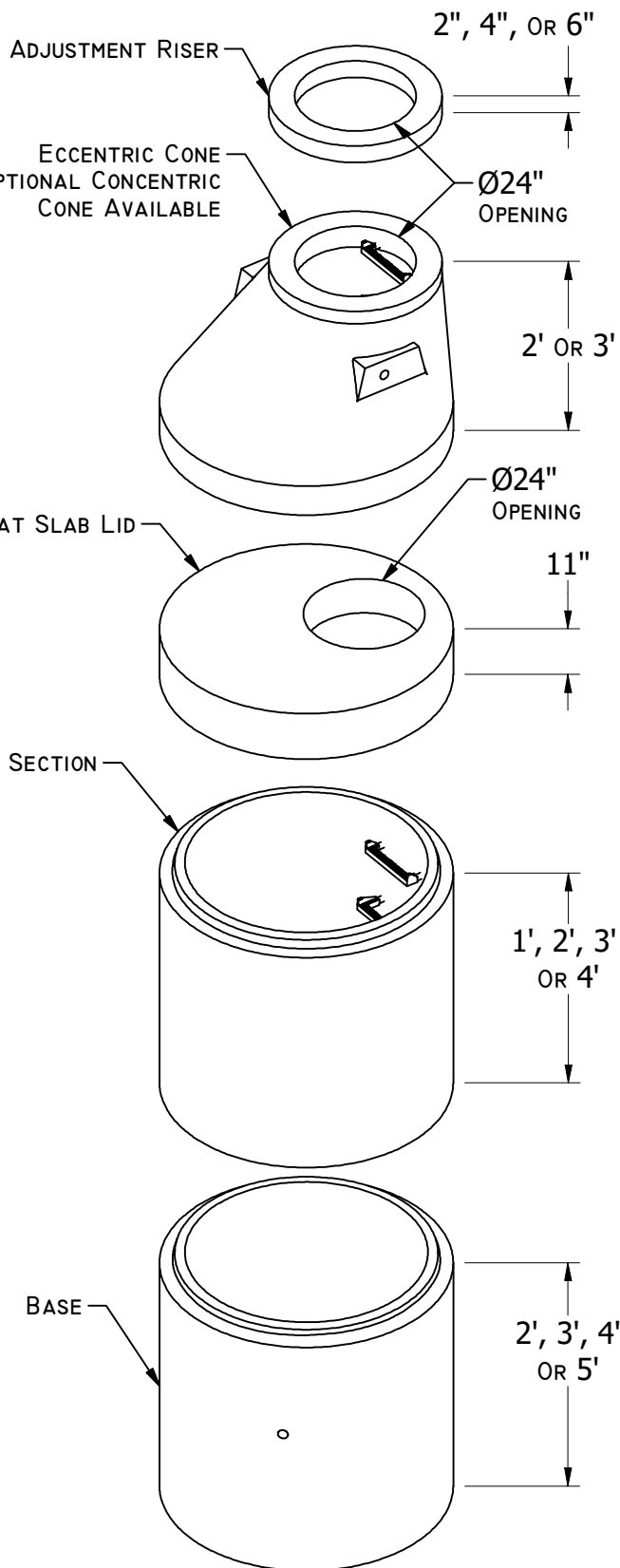
- MEET ASTM C478
- STEPS PLACED VERTICALLY 12" O.C.
- LADDER PROVIDED WITH BASE

WEIGHTS

- 48" x 2' BASE: 3200 LB
ADDITIONAL FOOTAGE: 850 LB/FT
- 48" SECTIONS: 850 LB/FT
- FLAT SLAB LID: 1700 LB
- 48" x 2' ECCENTRIC CONE: 1600 LB
- 48" x 3' ECCENTRIC CORE: 2200 LB
- OPTIONAL 48" x 2' CONCENTRIC CONE: 1680 LB
- OPTIONAL BOTTOM SLAB: 2350 LB
- OPTIONAL 4-WAY K.O.: SUBTRACT 1320 LB FROM TOTAL WEIGHT

OPTIONS

- KOR-N-SEAL RUBBER BOOTS
- PRE-CHANNELED BASES
- COATINGS PER DISTRICT REQUIREMENTS
- MASTIC
- GU LINED BASES



JOINT DETAIL