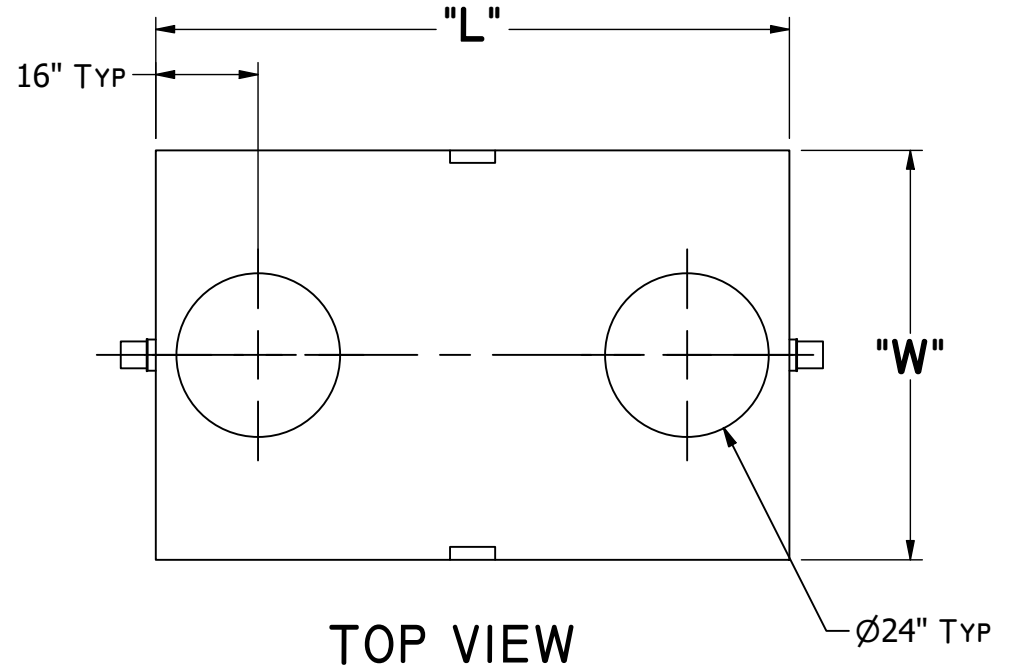
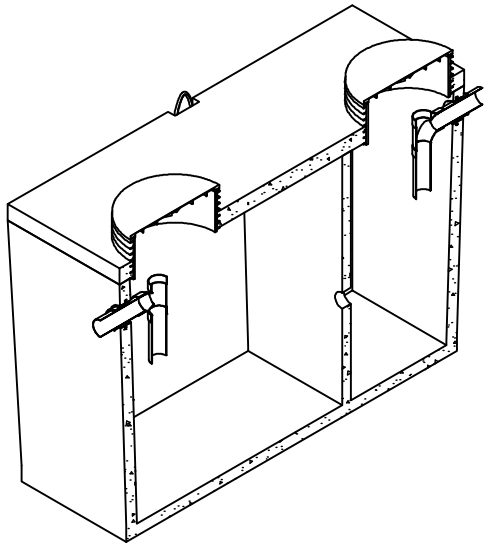
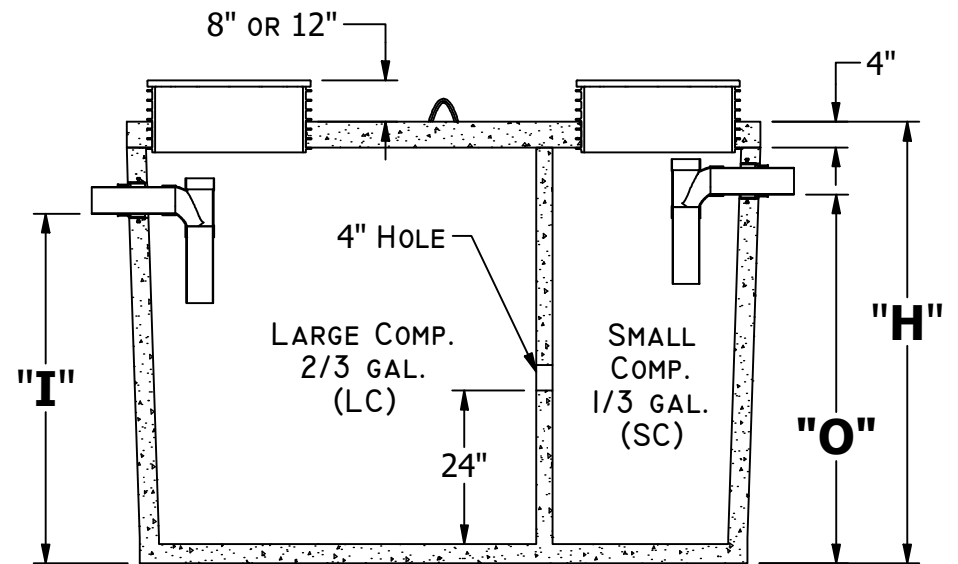


OSCAR LOWe FLOW SEPTIC TANK - X02 (1000 - 3000 gal.)



GENERAL NOTES:

- CONCRETE: 28 DAY COMPRESSIVE STRENGTH $f_c = 4500\text{psi}$
- MESH: ASTM A-185 GRADE 88
- DL: 36" EARTH COVER
- LL: 25 SNOW
- SOILS: 2000psi
- WATER PRESSURE: 62.4psf
- DESIGN: ASTM C-857 "MINIMUM STRUCTURAL DESIGN LOADING FOR UNDERGROUND PRECAST CONCRETE UTILITY STRUCTURES"
- IF H-20 TRAFFIC LID IS INSTALLED HEIGHT (H) IS RAISED 4"
- REINFORCMENT: REBAR: #4 ASTM A-615 GRADE 60 REBAR 12" O.C. THROUGHOUT BASE AND TOP SECTIONS, 4"X4"/4 GAUGE MESH WITH 2-#4 REBAR RUNNING HORIZONTALLY THROUGH BELL JOINTS IN MID-SECTION.
- FLEXIBLE PIPE ADAPTER PRESS SEAL 4" CAST-A-SEAL
- JOINT MATERIAL: MEETS FEDERAL SPECIFICATIONS SS-S-00210, AASHTO M-198B AND ASTM C990
- TRAFFIC RATED RISERS AS NEEDED



	L	W	H	I	O	Weight (lb)	SC (Gal./in)	LC (Gal./in)
1000 Gal.	99	64	65	54	51	10000	7.15	14.31
1250 Gal.	99	64	76	65	62	10200	6.73	13.46
1500 Gal.	114	72	76	65	62	12900	9.17	18.33
1750 Gal.	114	72	82	70	67	13300	8.93	17.86
3000 Gal.	151	86	92	76	73	22700	14.87	29.75