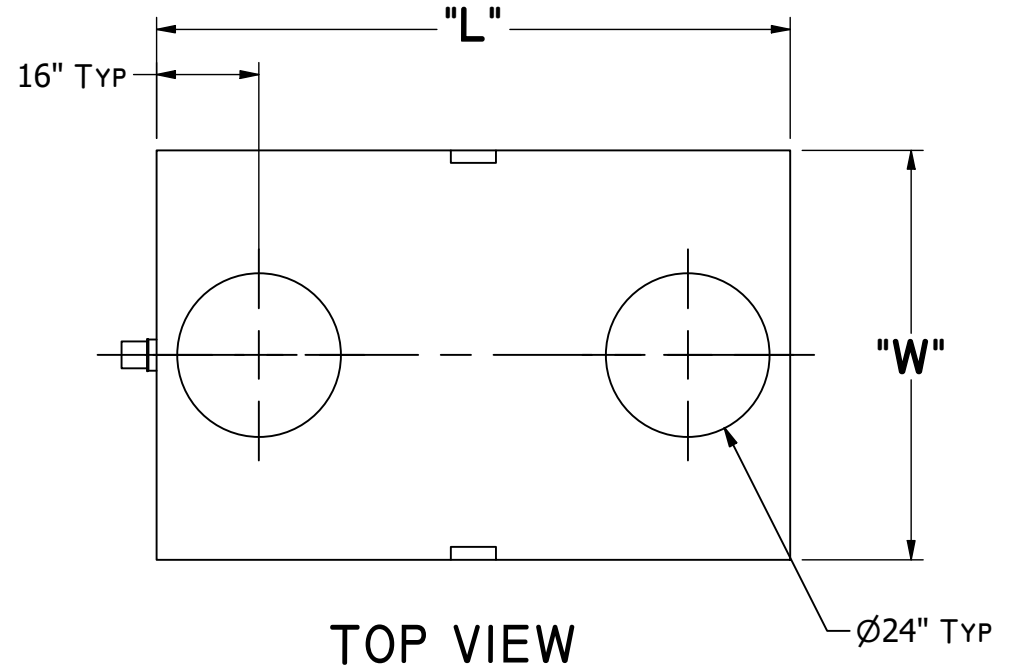
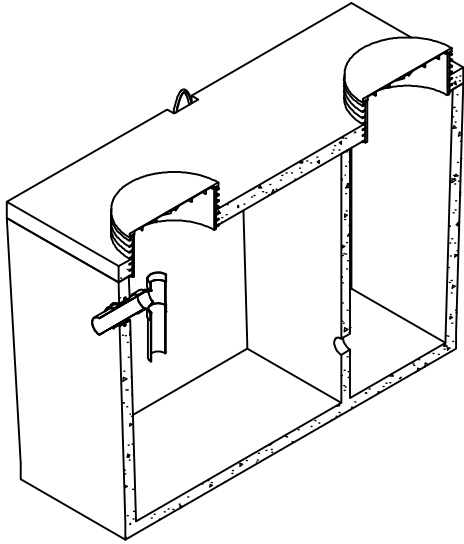


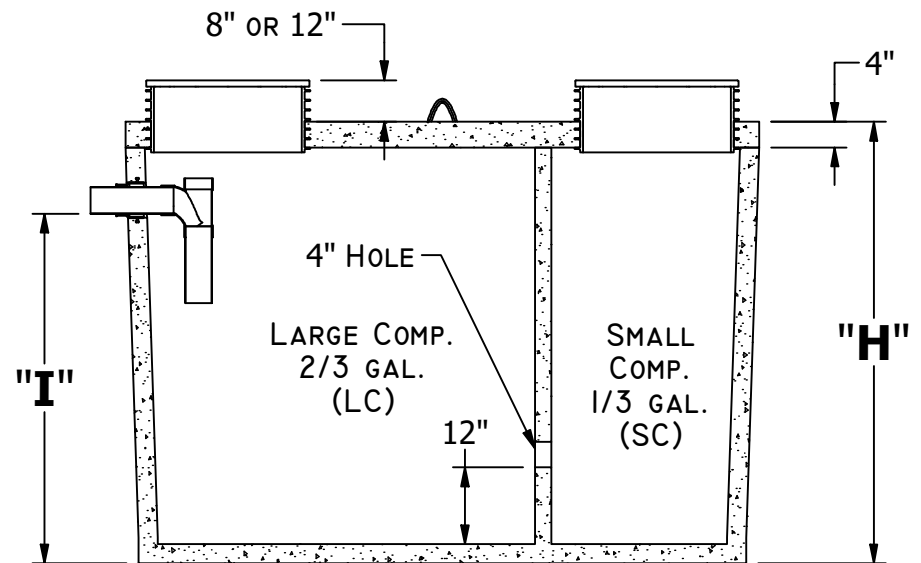
OSCAR LOW_e FLOW PUMP TANK - X02

(1000 - 3000 gal.)



GENERAL NOTES:

- CONCRETE: 28 DAY COMPRESSIVE STRENGTH $f_c = 4500\text{psi}$
- MESH: ASTM A-185 GRADE 88
- DL: 36" EARTH COVER
- LL: 25 SNOW
- SOILS: 2000psi
- WATER PRESSURE: 62.4psf
- DESIGN: ASTM C-857 "MINIMUM STRUCTURAL DESIGN LOADING FOR UNDERGROUND PRECAST CONCRETE UTILITY STRUCTURES"
- IF H-20 TRAFFIC LID IS INSTALLED HEIGHT (H) IS RAISED 4"
- REINFORCMENT: REBAR: #4 ASTM A-615 GRADE 60 REBAR 12" O.C. THROUGHOUT BASE AND TOP SECTIONS, 4"X4"/4 GAUGE MESH WITH 2-#4 REBAR RUNNING HORIZONTALLY THROUGH BELL JOINTS IN MID-SECTION.
- FLEXIBLE PIPE ADAPTER PRESS SEAL 4" CAST-A-SEAL
- JOINT MATERIAL: MEETS FEDERAL SPECIFICATIONS SS-S-00210, AASHTO M-198B AND ASTM C990
- TRAFFIC RATED RISERS AS NEEDED



	L	W	H	I	Weight (lb)	SC (Gal./in)	LC (Gal./in)
1000 Gal.	99	64	65	51	10000	7.15	14.31
1250 Gal.	99	64	76	62	10200	6.73	13.46
1500 Gal.	114	72	76	62	12900	9.17	18.33
1750 Gal.	114	72	82	67	13300	8.93	17.86
3000 Gal.	151	86	92	73	22700	14.87	29.75

FRONT SECTIONAL VIEW