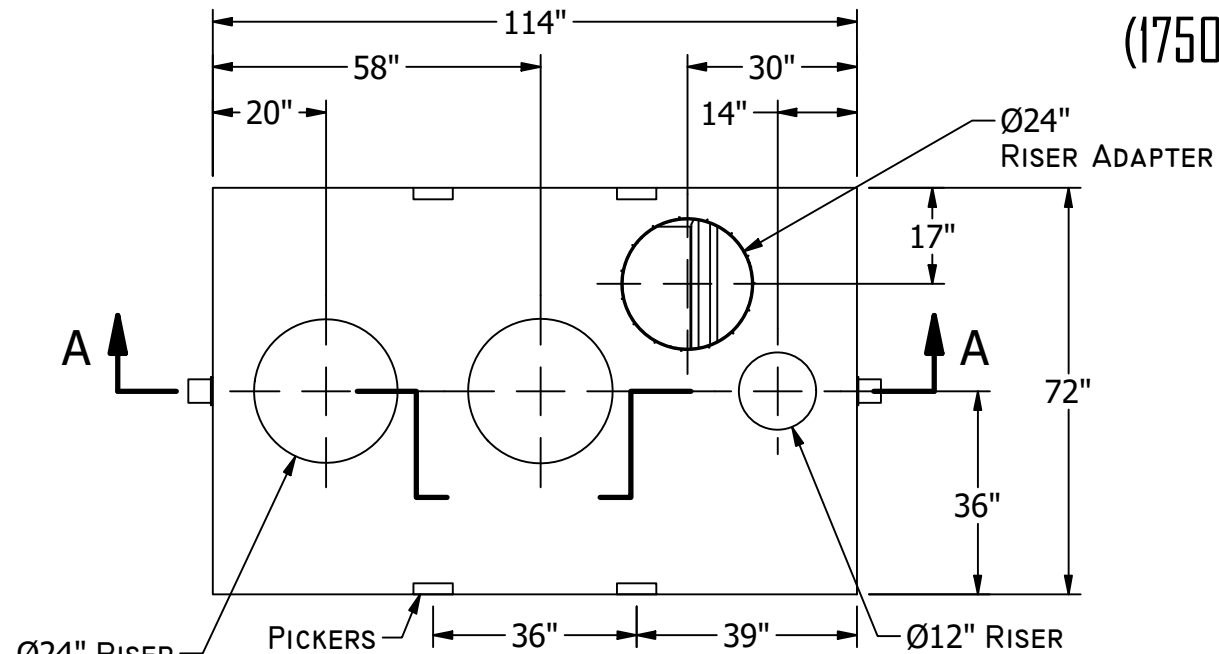
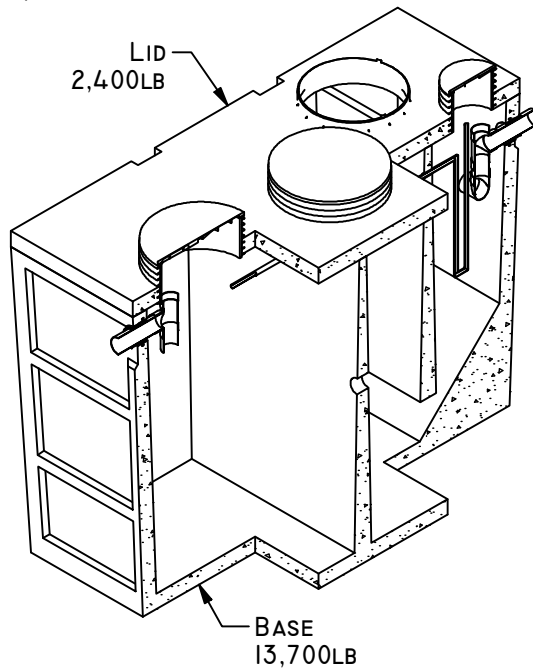
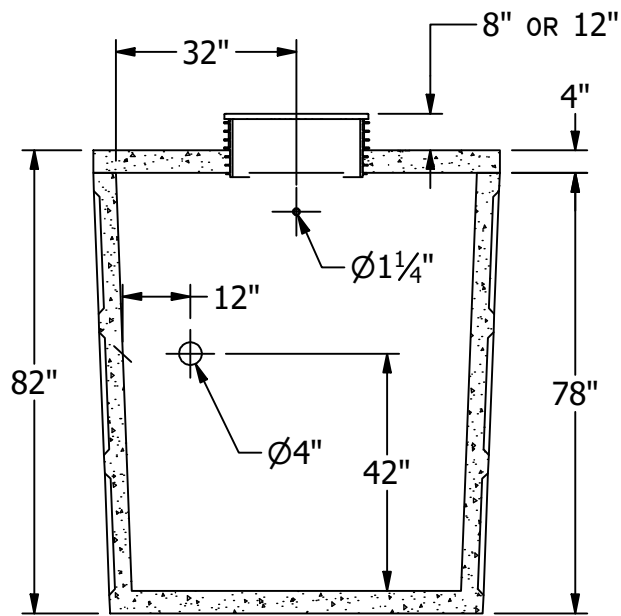


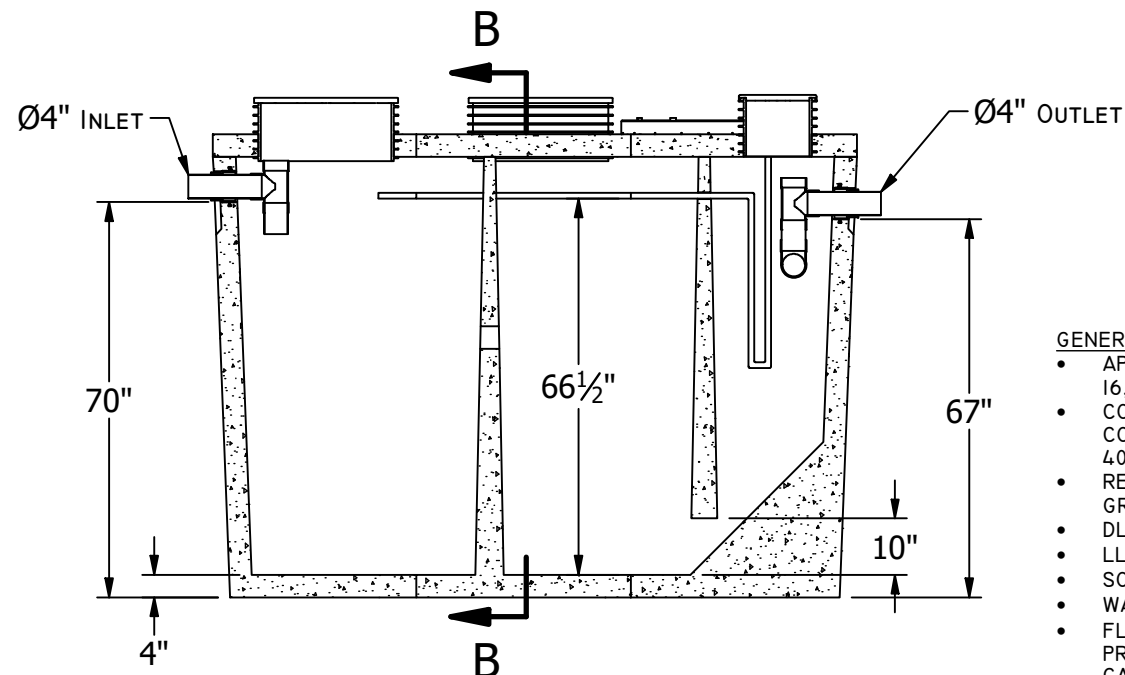
19604 67TH AVE NE ARLINGTON, WA 98223  
 (360) 435-5531 WWW.CUZCONCRETE.COM



**TOP VIEW**



**LEFT SECTIONAL VIEW  
SECTION B-B**



**FRONT SECTIONAL VIEW  
SECTION A-A**

- GENERAL NOTES:**
- APPROX. TOTAL WEIGHT: 16,100LB
  - CONCRETE 28 DAY COMPRESSIVE STRENGTH FC: 4000PSI
  - REBAR #4 ASTM A-615 GRADE 60
  - DL: 36IN EARTH COVER
  - LL: 25 SNOW
  - SOILS: 2000PSI
  - WATER PRESSURE: 62.4PSF
  - FLEXIBLE PIPE ADAPTER PRESS SEAL 4IN CAST-A-STEEL
  - JOINT MATERIAL MEETS FEDERAL SPECS. SS-S-002I