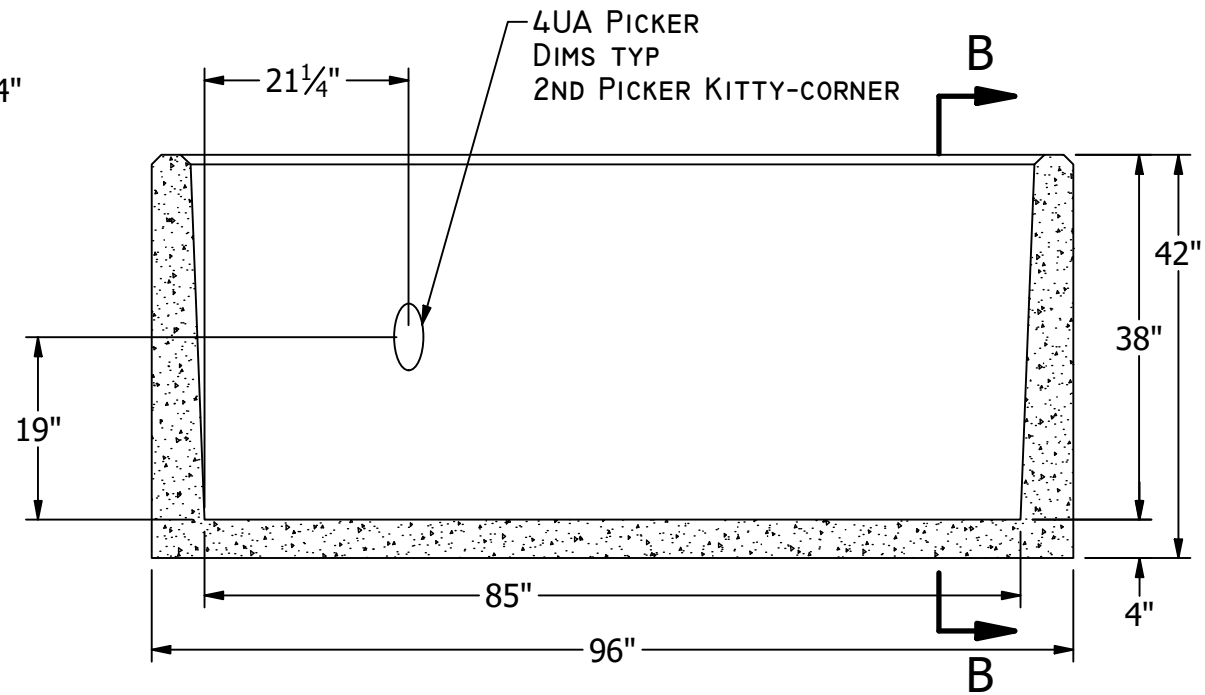
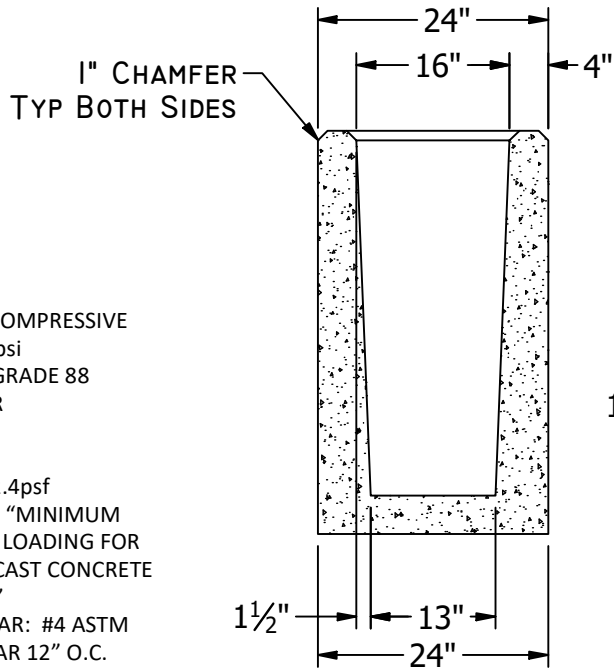
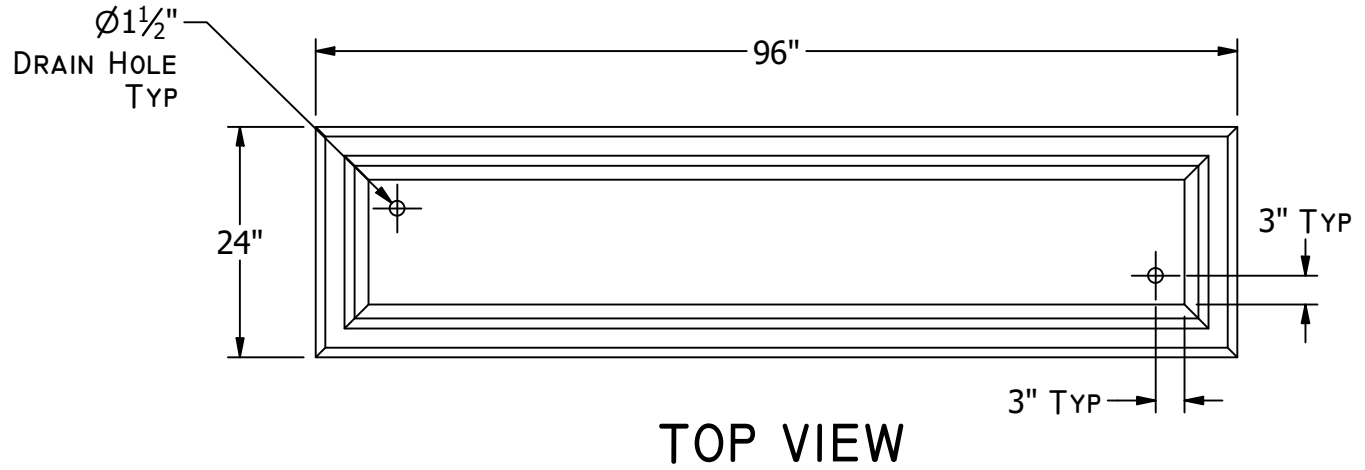
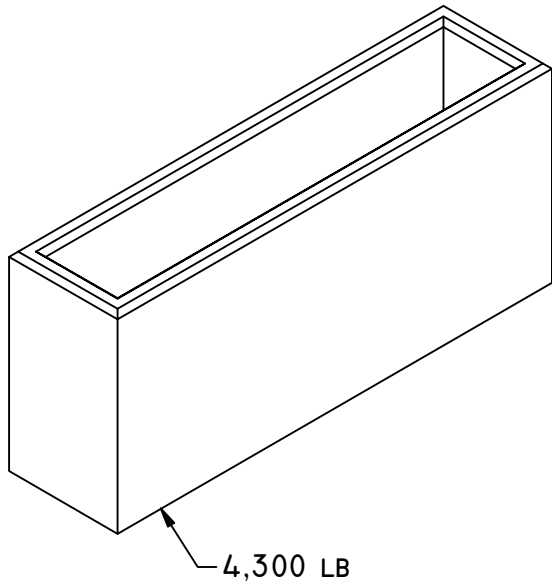


19604 67TH AVE NE ARLINGTON, WA 98223
 (360) 435-5531 WWW.CUZCONCRETE.COM



- GENERAL NOTES:**
- CONCRETE: 28 DAY COMPRESSIVE STRENGTH $f_c = 4500\text{psi}$
 - MESH: ASTM A-185 GRADE 88
 - DL: 36" EARTH COVER
 - LL: 25 SNOW
 - SOILS: 2000psi
 - WATER PRESSURE: 62.4psf
 - DESIGN: ASTM C-857 "MINIMUM STRUCTURAL DESIGN LOADING FOR UNDERGROUND PRECAST CONCRETE UTILITY STRUCTURES"
 - REINFORCEMENT: REBAR: #4 ASTM A-615 GRADE 60 REBAR 12" O.C.