

**TOP VIEW**

Reinforcement:

6 - #4 Vertical

As Needed - #3 Hoops - 12" O.C.

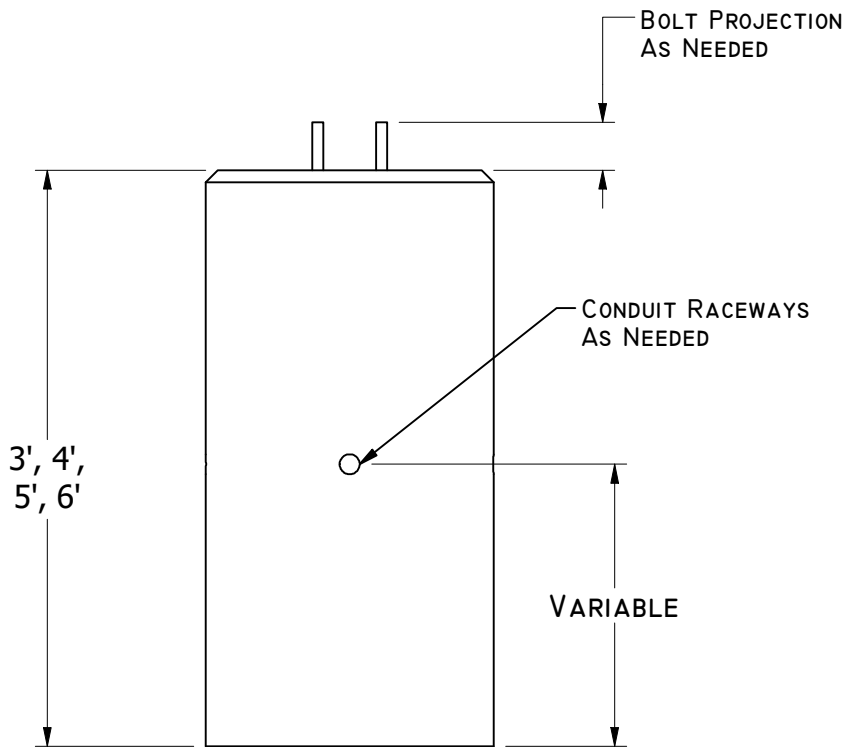
Weight (lb):

3' = 850

4' = 1100

5' = 1380

6' = 1650



**FRONT VIEW**

GENERAL NOTES:

- CONCRETE: 28 DAY COMPRESSIVE STRENGTH  $f'c = 3000$  psi PER ASTM C-33 & C-150
- REBAR: ASTM-165 & A-123 GRADE 60 SIZE & PLACEMENT REQUIRED

Part Numbers:

CCP - 18 - 3PB

CCP - 18 - 4PB

CCP - 18 - 5PB

CCP - 18 - 6PB