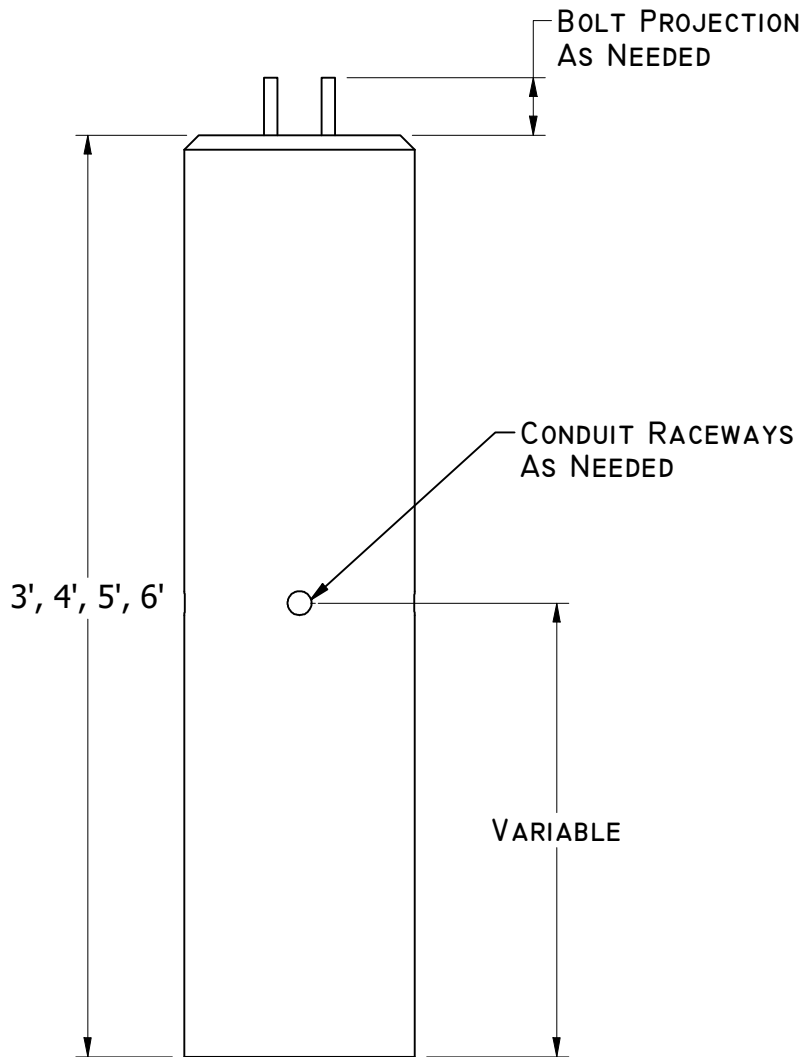


TOP VIEW



FRONT VIEW

Reinforcement:

6 - #4 Vertical
 As Needed - #3 Hoops - 12" O.C.

Weight (lb):

3' = 380
 4' = 500
 5' = 620
 6' = 740

GENERAL NOTES:

- CONCRETE: 28 DAY COMPRESSIVE STRENGTH $f'_c = 3000$ psi PER ASTM C-33 & C-150
- REBAR: ASTM-165 & A-123 GRADE 60 SIZE & PLACEMENT REQUIRED

Part Numbers:

CCP - 12 - 3PB
 CCP - 12 - 4PB
 CCP - 12 - 5PB
 CCP - 12 - 6PB