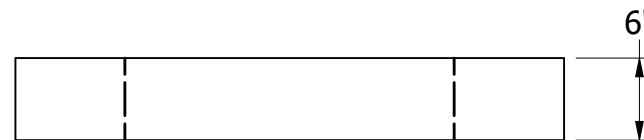


TOP VIEW



FRONT VIEW

GENERAL NOTES:

- TOTAL WEIGHT: 500 LBS
- CONFORMS TO WASHINGTON STATE APWA / WSDOT
- ASTM C33 / C150: 28-DAY COMPRESSIVE STRENGTH F'c: 4000 PSI
- REINFORCING REBAR: 0.12 SQ. IN PER FT.