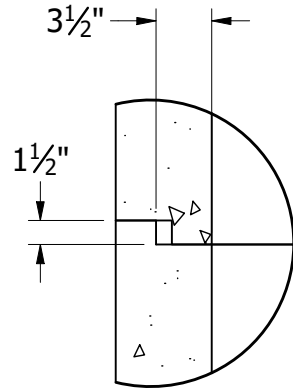
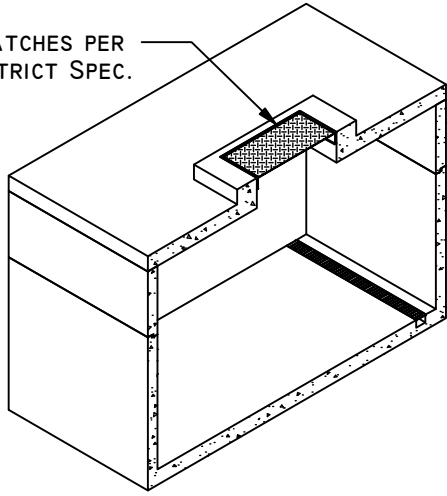
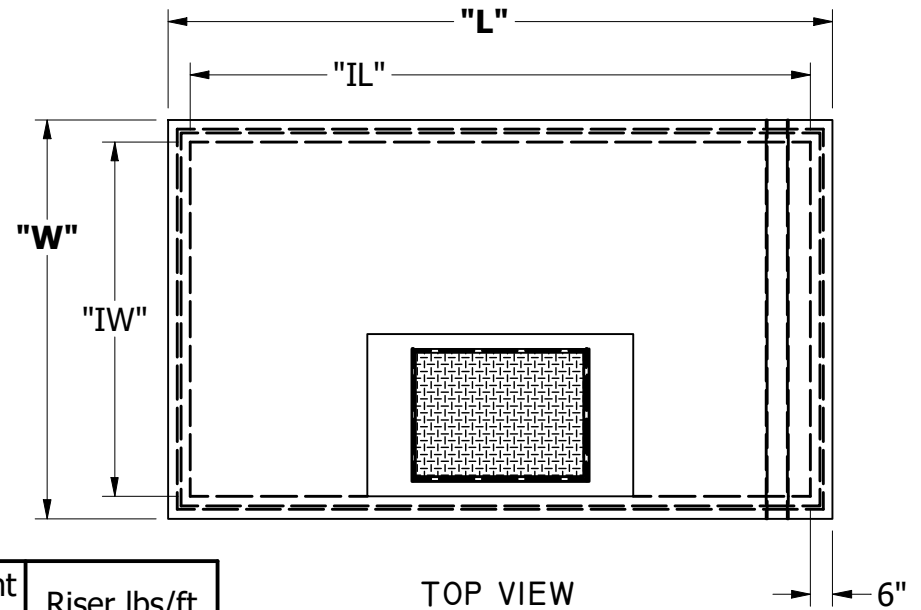


HATCHES PER DISTRICT SPEC.



DETAIL A
DIMENSIONS TYPICAL

DDC VAULT (800 SERIES)

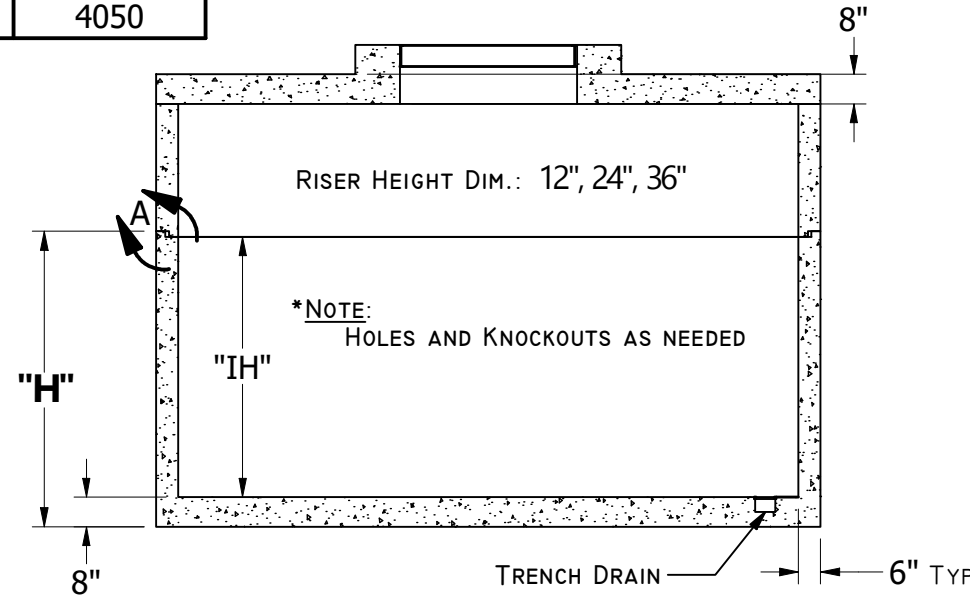


TOP VIEW

	W	L	H	Inside W	Inside L	Inside H	Lid Weight (lbs)	Base Weight (lbs)	Riser lbs/ft
810	108	132	80	96	120	72	9800	27150	2700
811	108	144	80	96	132	72	10700	29000	2800
814	108	180	80	96	168	72	13450	33900	3450
816	108	204	80	96	192	72	15250	37950	3750
818	108	228	80	96	216	72	17050	41550	4050

GENERAL NOTES:

- CONCRETE: 28 DAY COMPRESSIVE STRENGTH $f_c = 4500\text{PSI}$
- ALL DIMENSIONS IN INCHES
- REBAR: #4 ASTM A-615 GRADE 60
- MESH: ASTM A-185 GRADE 88
- DESIGN: ASTM C-857 MINIMUM STRUCTURAL DESIGN LOADING FOR UNDERGROUND PRECAST CONCRETE UTILITY STRUCTURES
- LOADS: H-20 TRUCK WHEEL WITH 30% IMPACT PER AASHTO
- REINFORCING PLACEMENT: #4 REBAR 12 O.C. THROUGHOUT BASE AND TOP SECTIONS, 4 X 4 1/4 GAUGE MESH WITH 2-#4 REBAR RUNNING HORIZONTALLY THROUGH BELL JOINTS IN MID-SECTION.
- JOINT MATERIAL: MEETS FEDERAL SPECIFICATIONS SS-S-00210, AASHTO M-198B AND ASTM C990
- HATCHES: PER DISTRICT SPECIFICATIONS



FRONT SECTIONAL VIEW