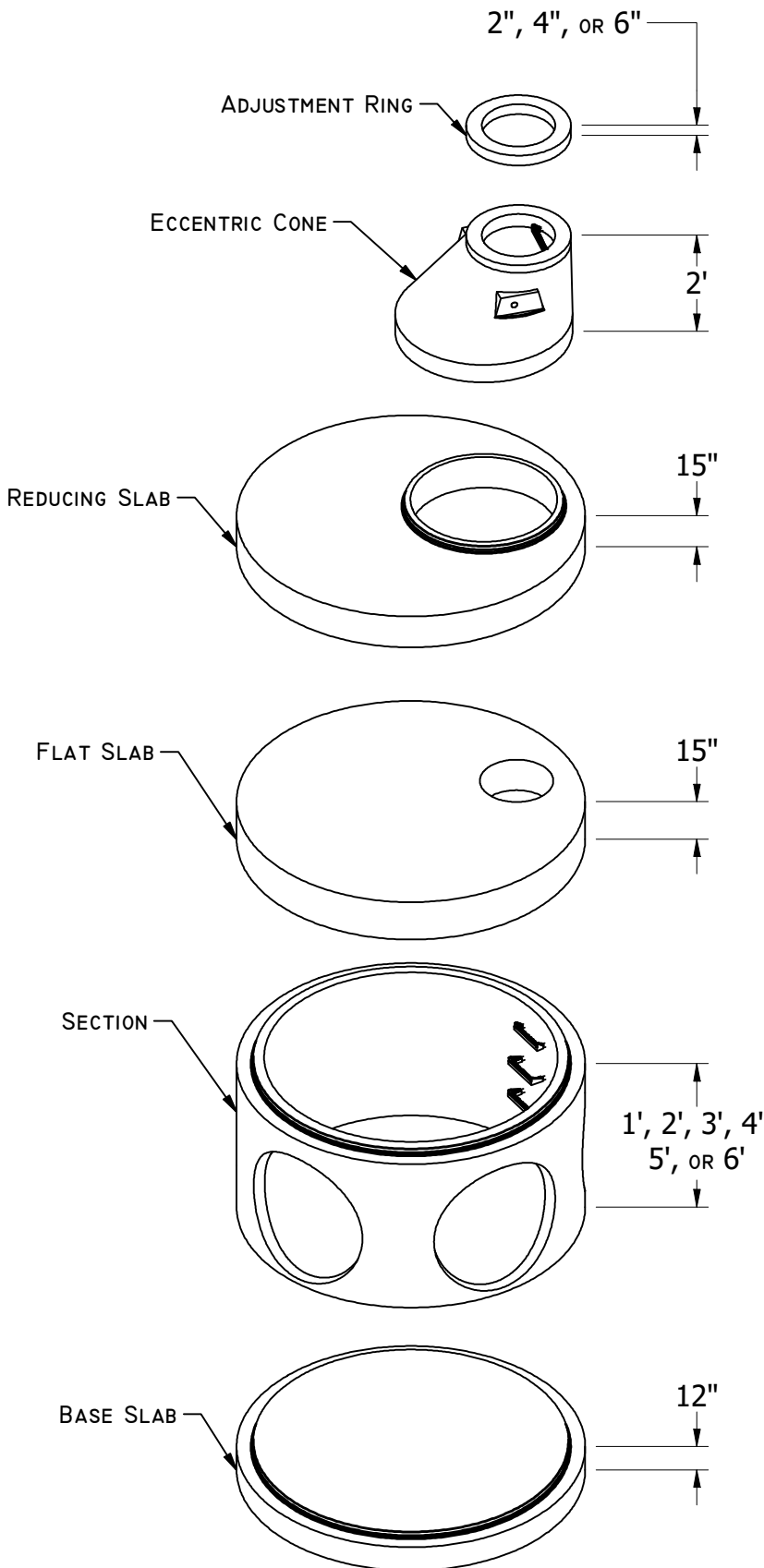


19604 67TH AVE NE ARLINGTON, WA 98223
 (360) 435-5531 WWW.CUZCONCRETE.COM



CONFORMS TO:

- WASHINGTON STATE APWA/WSDOT (STANDARD SPECIFICATIONS)
- MEETS H-20 REQUIRMENTS
- ASTM C478 MANHOLES
- ASTM C443 RUBBER GASKET JOINTS
- ASTM C-33 AND C-150 28 DAY COMPRESSIVE STRENGHT F'C = 4000PSI

REINFORCING:

- TOP SLAB #5 DEFORMED REBAR AROUND OPENING DIAGONALLY ON BOTH SIDES OF OPENING AT 6" O.C. IN BOTH DIRECTIONS
- CIRCUMFERENTIAL WALL: MINIMUM 0.24 IN.²/LINEAR FT.
- BASE: 0.40 IN.²/LINEAR FT. IN BOTH DIRECTIONS; MINIMUM YIELD STRENGTH = 60,000PSI

HOLE DIMENSIONS

- STANDARD BASE: BANK-CORE DRILL AS NEEDED PER CUSTOMER REQUIRMENTS
- MAXIMUM HOLE DIAMETER IS 84"
- 12" MINMUM DISTANCE BETWEEN HOLES

STEPS AND LADDERS

- MEET ASTM C478
- STEPS PLACED VERTICALLY 12" O.C.
- LADDER PROVIDED WITH BASE

STRUCTURE DIMENSIONS

- INSIDE DIAMETER: 96"
- OUTSIDE DIAMETER: 114"
- WALL THICKNESS: 9"
- BASE THICKNESS: 12"

WEIGHTS

- 12" X 96" BASE SLAB: 12650 LB
- 1' X 96" SECTION: 3850 LB
- 2' X 96" SECTION: 6950 LB
- 3' X 96" SECTION: 10050 LB
- 4' X 96" SECTION: 13150 LB
- 5' X 96" SECTION: 16250 LB
- 6' X 96" SECTION: 19350 LB
- 11" X 114" FLAT SLAB: 13250 LB
- 48" TO 24" X 2' ECC. CONE: 1500 LB
- 4" X 24" ADJUSTMENT RISER: 80LB
- 15" X 96" TO 48" REDUCING SLAB: 11550 LB

OPTIONS

- KOR-N-SEAL RUBBER BOOTS
- PRE-CHANNELED BASES
- COATINGS PER DISTRICT REQUIRMENTS