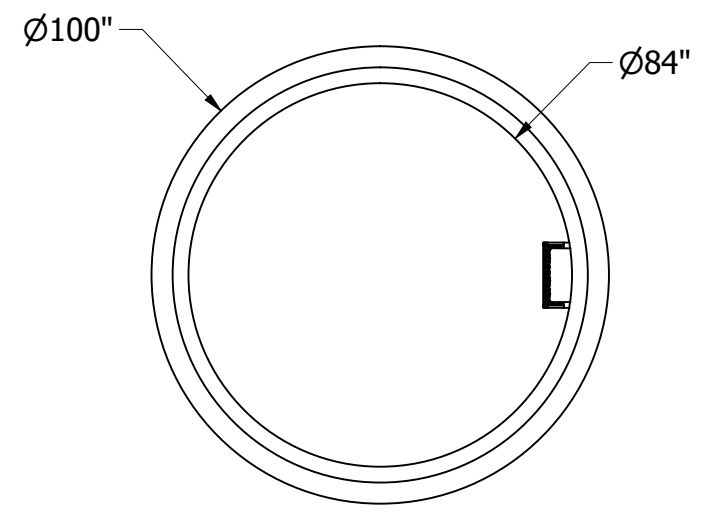
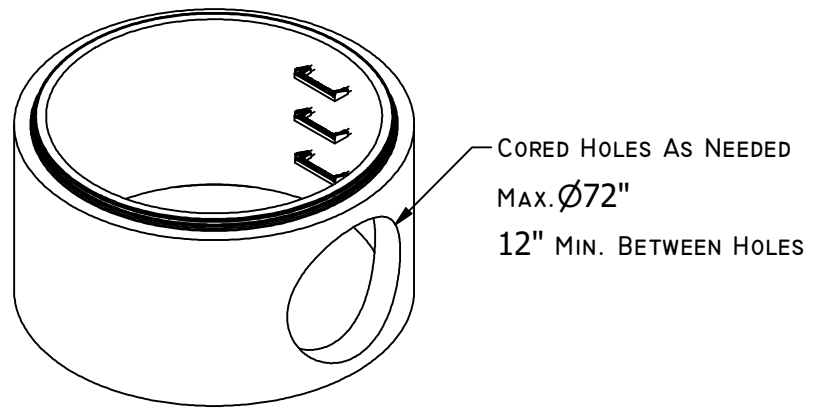


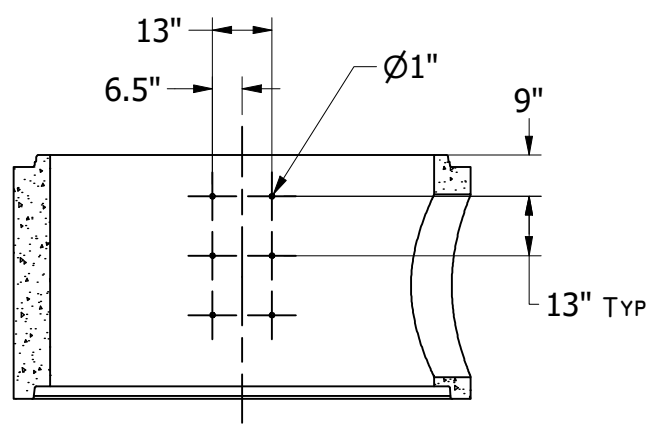
19604 67TH AVE NE ARLINGTON, WA 98223  
 (360) 435-5531 WWW.CUZCONCRETE.COM



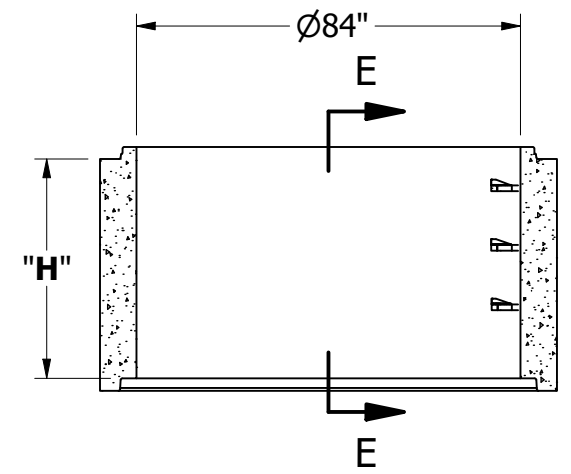
**TOP VIEW**

H	Weight (lb)
1'	3000
2'	5400
3'	7850
4'	10250
5'	12650
6'	15100

- GENERAL NOTES:**
- CONCRETE 28 DAY COMPRESSIVE STRENGTH  $f_c$ : 4000PSI
  - AREA OF STEEL: .24 IN<sup>2</sup>
  - REBAR #4 ASTM A-615 GRADE 60
  - DL: 36IN EARTH COVER
  - LL: 25 SNOW
  - SOILS: 2000PSI
  - WATER PRESSURE: 62.4PSF
  - FLEXIBLE PIPE ADAPTER PRESS SEAL 4IN CAST-A-STEEL
  - JOINT MATERIAL MEETS FEDERAL SPECS. SS-S-002I



**LADDER VIEW**  
 STEPS OMITTED FOR VISIBILITY  
 DIMENSIONS TYP  
 SECTION E-E



**FRONT SECTIONAL VIEW**