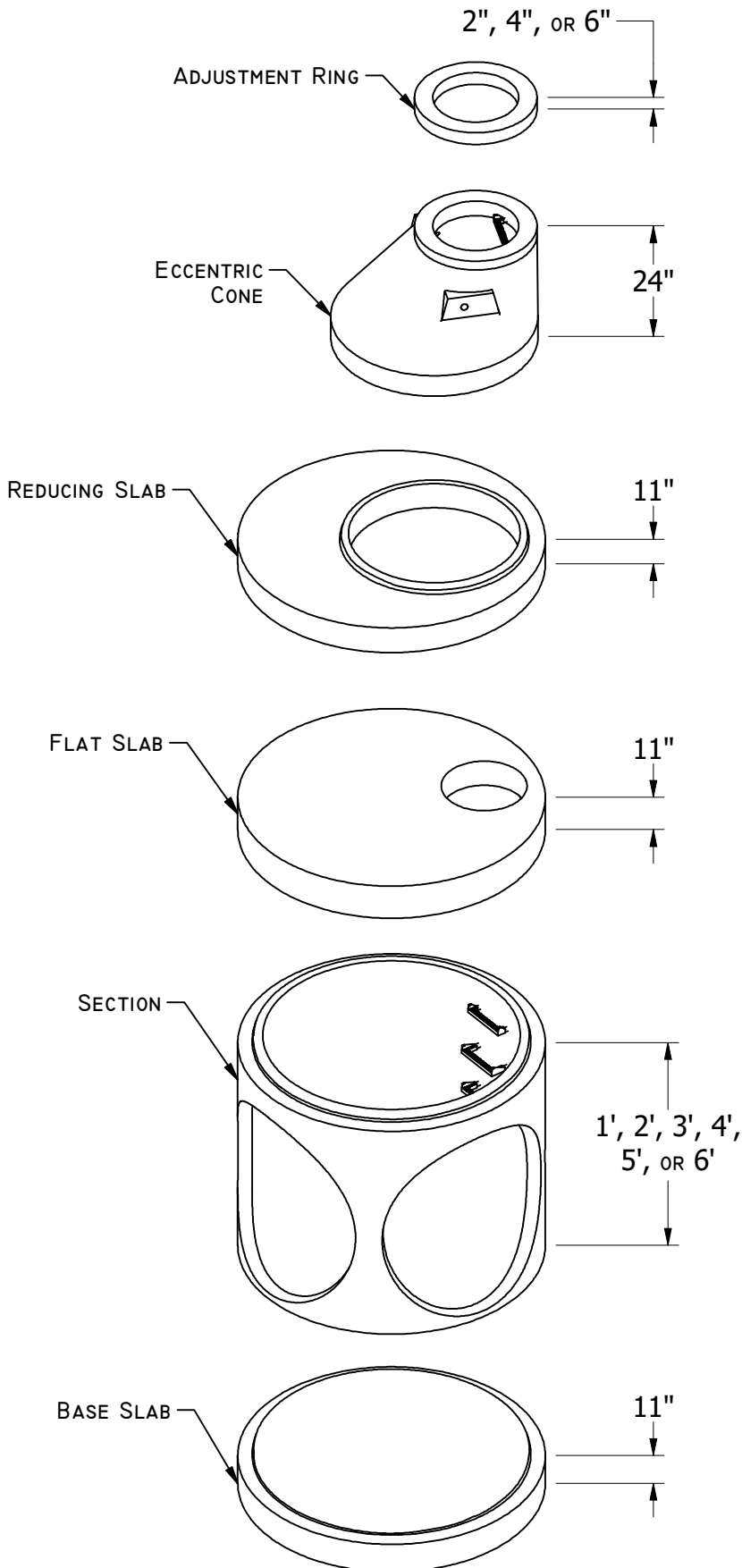


19604 67TH AVE NE ARLINGTON, WA 98223  
 (360) 435-5531 WWW.CUZCONCRETE.COM



**CONFORMS TO:**

- WASHINGTON STATE APWA/WSDOT (STANDARD SPECIFICATIONS)
- MEETS H-20 REQUIREMENTS
- ASTM C478 MANHOLES
- ASTM C443 RUBBER GASKET JOINTS
- ASTM C-33 AND C-150 28 DAY COMPRESSIVE STRENGTH F'C = 4000PSI

**REINFORCING:**

- TOP SLAB #5 DEFORMED REBAR AROUND OPENING DIAGONALLY ON BOTH SIDES OF OPENING AT 6" O.C. IN BOTH DIRECTIONS
- CIRCUMFERENTIAL WALL: MINIMUM 0.18 IN.<sup>2</sup>/LINEAR FT.
- BASE: 0.35 IN.<sup>2</sup>/LINEAR FT. IN BOTH DIRECTIONS; MINIMUM YIELD STRENGTH = 60,000PSI

**HOLE DIMENSIONS**

- STANDARD BASE: BANK-CORE DRILL AS NEEDED PER CUSTOMER REQUIREMENTS
- MAXIMUM HOLE DIAMETER IS 60"
- 12" MINIMUM DISTANCE BETWEEN HOLES

**STEPS AND LADDERS**

- MEET ASTM C478
- STEPS PLACED VERTICALLY 12" O.C.
- LADDER PROVIDED WITH BASE

**STRUCTURE DIMENSIONS**

- INSIDE DIAMETER: 72"
- OUTSIDE DIAMETER: 86"
- WALL THICKNESS: 7"
- BASE THICKNESS: 11"

**WEIGHTS**

- 11" X 72" BASE SLAB: 6650 LB
- 1' X 72" SECTION: 2250 LB
- 2' X 72" SECTION: 4100 LB
- 3' X 72" SECTION: 5900 LB
- 4' X 72" SECTION: 7700 LB
- 5' X 72" SECTION: 9550 LB
- 6' X 72" SECTION: 11350 LB
- 11" X 86" FLAT SLAB: 5450 LB
- 48" TO 24" X 2' Ecc. CONE: 1500 LB
- 4" X 24" ADJUSTMENT RISER: 80LB PER 2 INCHES
- 11" X 72" TO 48" REDUCING SLAB: 4250 LB

**OPTIONS**

- KOR-N-SEAL RUBBER BOOTS
- PRE-CHANNELED BASES
- COATINGS PER DISTRICT REQUIREMENTS