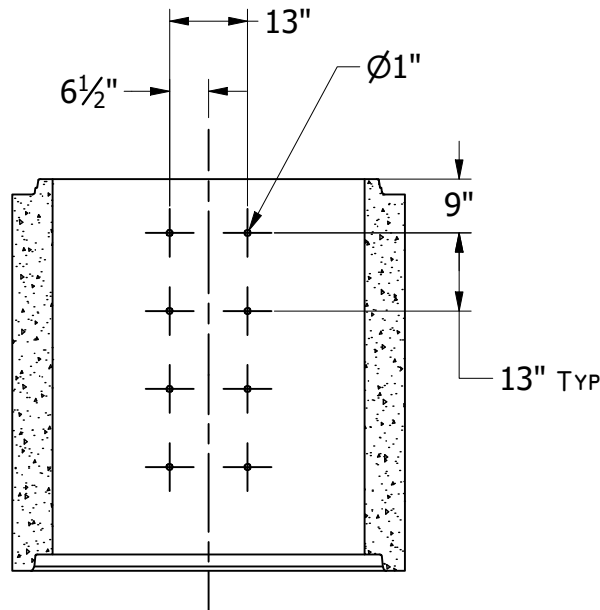


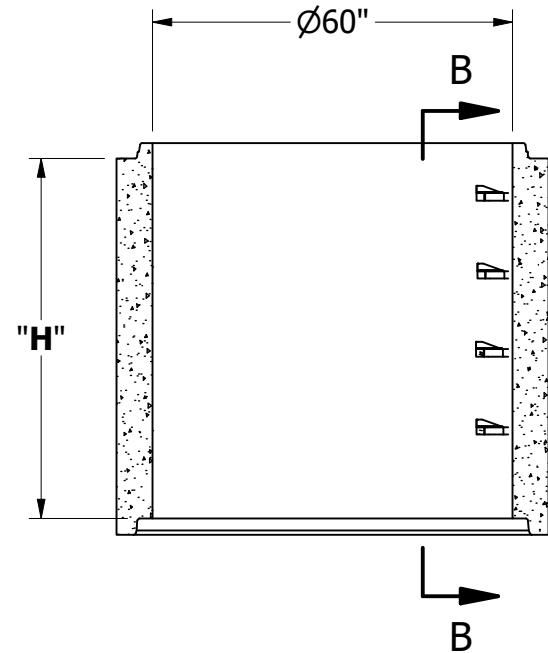
H	Weight (lb)
1'	1650
2'	2950
3'	4250
4'	5550
5'	6850

GENERAL NOTES:

- CONCRETE 28 DAY COMPRESSIVE STRENGTH FC: 4000PSI
- AREA OF STEEL: .15 IN²
- REBAR #4 ASTM A-615 GRADE 60
- DL: 36IN EARTH COVER
- LL: 25 SNOW
- SOILS: 2000PSI
- WATER PRESSURE: 62.4PSF
- FLEXIBLE PIPE ADAPTER PRESS SEAL 4IN CAST-A-STEEL
- JOINT MATERIAL MEETS FEDERAL SPECS. SS-S-002I



LADDER VIEW
 STEPS OMITTED FOR VISIBILITY
 DIMENSIONS TYP
 SECTION B-B



FRONT SECTIONAL VIEW