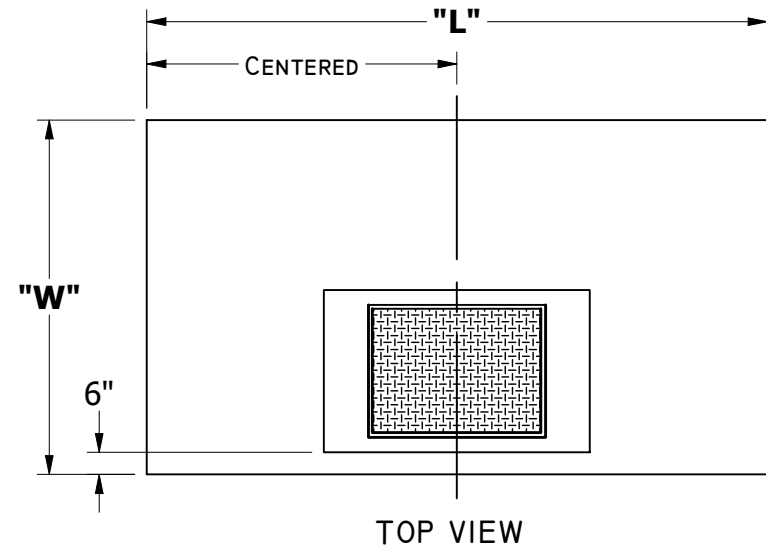


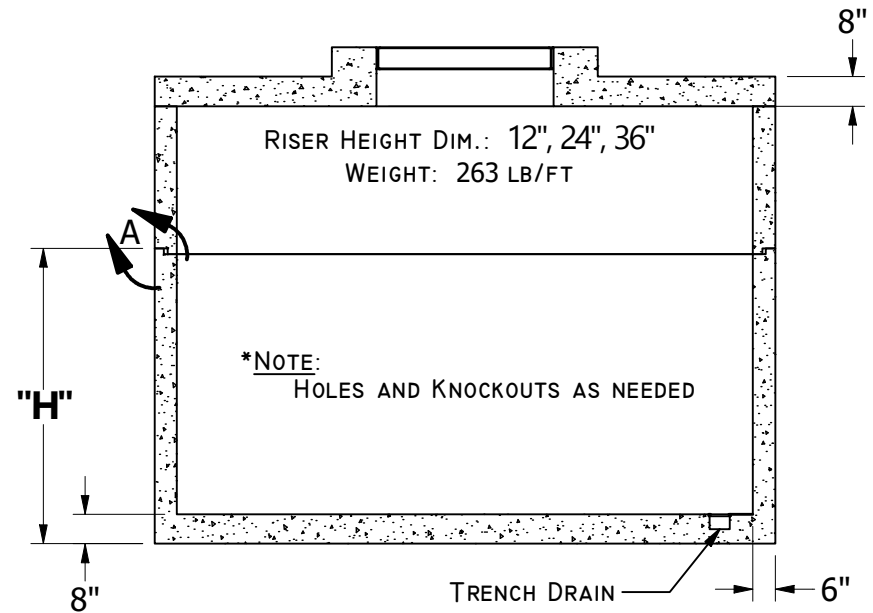
DETAIL A
DIMENSIONS TYPICAL



DDC Dimensions					
	L	W	H	Lid Weight (lb)	Base Weight (lb)
814	168	96	80	11029	29731
816	192	96	80	12632	33563
818	216	96	80	14235	36970

GENERAL NOTES:

- CONCRETE: 28 DAY COMPRESSIVE STRENGTH $f_c = 4500\text{PSI}$
- ALL DIMENSIONS IN INCHES
- REBAR: #4 ASTM A-615 GRADE 60
- MESH: ASTM A-185 GRADE 88
- DESIGN: ASTM C-857 MINIMUM STRUCTURAL DESIGN LOADING FOR UNDERGROUND PRECAST CONCRETE UTILITY STRUCTURES
- LOADS: H-20 TRUCK WHEEL WITH 30% IMPACT PER AASHTO
- REINFORCING PLACEMENT: #4 REBAR 12 O.C. THROUGHOUT BASE AND TOP SECTIONS, 4 X 4 / 4 GAUGE MESH WITH 2-#4 REBAR RUNNING HORIZONTALLY THROUGH BELL JOINTS IN MID-SECTION.
- JOINT MATERIAL: MEETS FEDERAL SPECIFICATIONS SS-S-00210, AASHTO M-198B AND ASTM C990
- HATCHES: PER DISTRICT SPECIFICATIONS



FRONT SECTIONAL VIEW