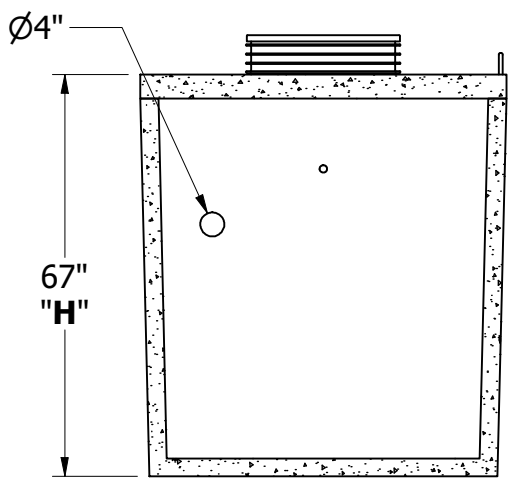
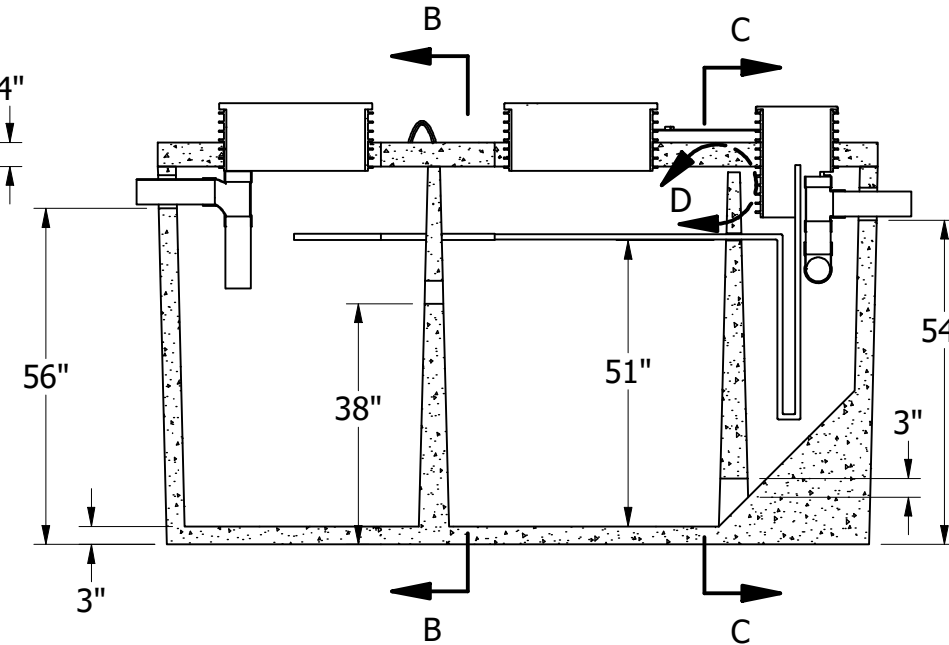


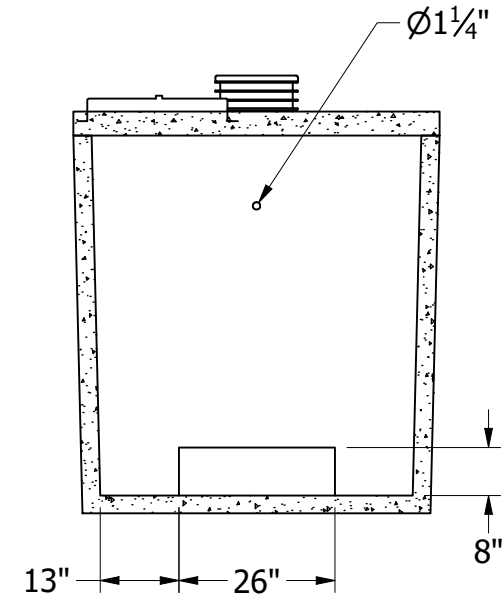
- GENERAL NOTES:**
- WEIGHT: 12,393LB
 - IF H₂O TRAFFIC LID IS INSTALLED HEIGHT (H) IS RAISED 4IN
 - CONCRETE 28 DAY COMPRESSIVE STRENGTH F_c: 4000PSI
 - REBAR #4 ASTM A-615 GRADE 60
 - DL: 36IN EARTH COVER
 - LL: 25 SNOW
 - SOILS: 2000PSI
 - WATER PRESSURE: 62.4PSF
 - FLEXIBLE PIPE ADAPTER PRESS SEAL 4IN CAST-A-STEEL
 - JOINT MATERIAL MEETS FEDERAL SPECS. SS-S-002I
 - RISERS AS REQUIRED



LEFT SECTIONAL VIEW
SECTION B-B



FRONT SECTIONAL VIEW
SECTION A-A



RIGHT SECTIONAL VIEW
SECTION C-C