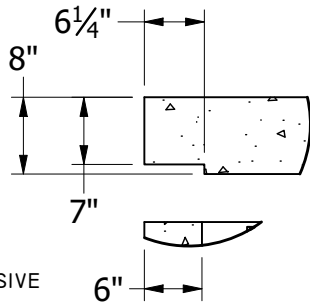
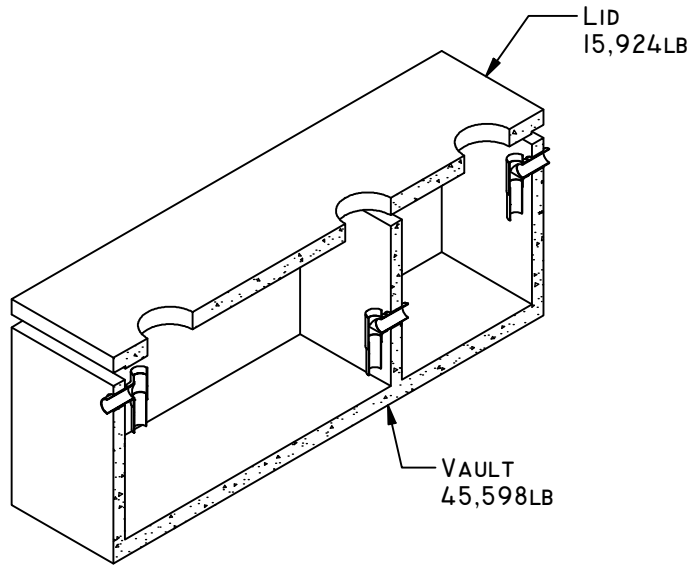
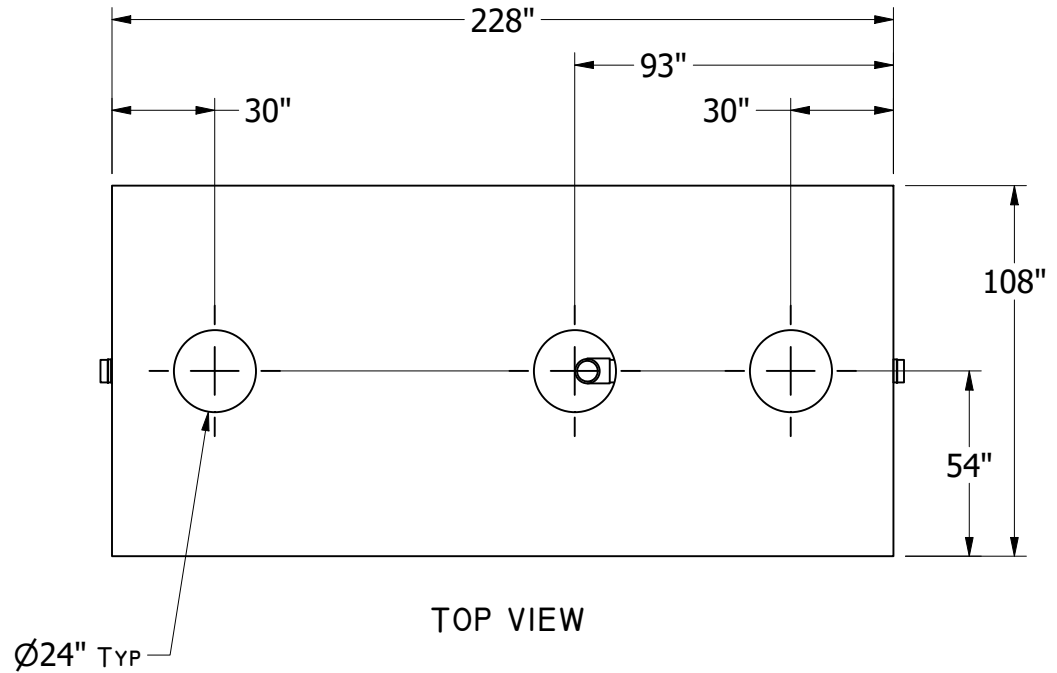


818 GREASE INTERCEPTOR (5000 gal.)



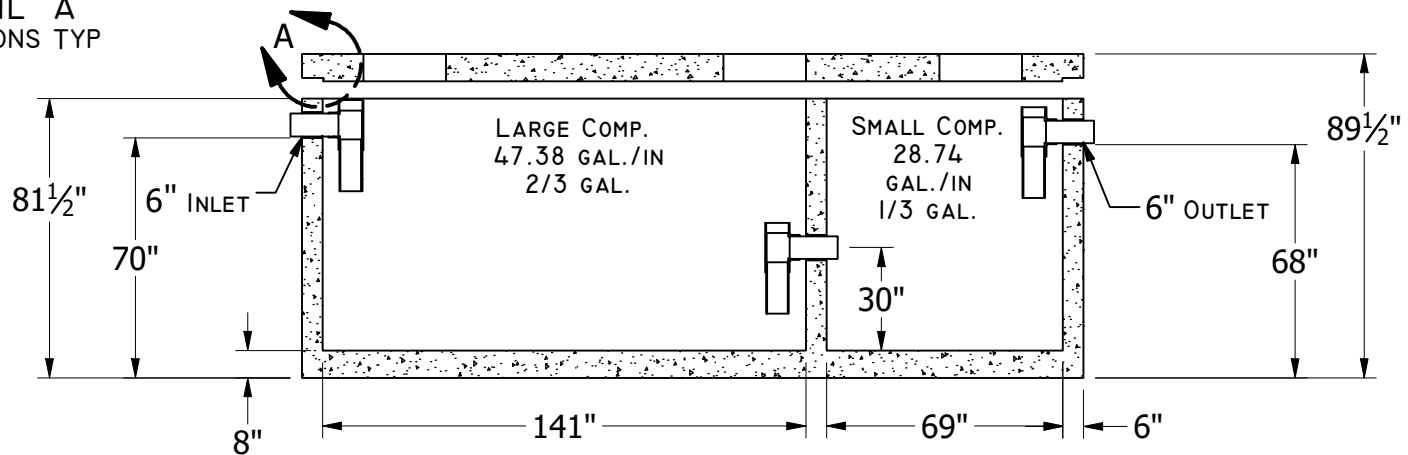
**DETAIL A
 DIMENSIONS TYP**



TOP VIEW

GENERAL NOTES:

- TOTAL WEIGHT: 61,484LB
- CONCRETE: 28 DAY COMPRESSIVE STRENGTH F_c: 4500PSI
- REBAR: #4 ASTM A-615 GRADE 60
- MESH: ASTM A-185 GRADE 88
- DESIGN: ASTM C-857 "MINIMUM STRUCTURAL DESIGN LOADING FOR UNDERGROUND PRECAST CONCRETE UTILITY STRUCTURES"
- LOADS: H-20 TRUCK WHEEL WITH 30% IMPACT PER AASHTO
- REINFORCING PLACEMENT: #4 REBAR 12" O.C. THROUGHOUT BASE AND TOP SECTIONS, 4"X4" / 4 GAUGE MESH WITH 2-#4 REBAR RUNNING HORIZONTALLY THROUGH BELL JOINTS IN MID-SECTION.
- JOINT MATERIAL: MEETS FEDERAL SPECIFICATIONS SS-S-00210, AASHTO M-198B AND ASTM C990
- TRAFFIC RATED RISERS AS NEEDED



FRONT SECTIONAL VIEW