

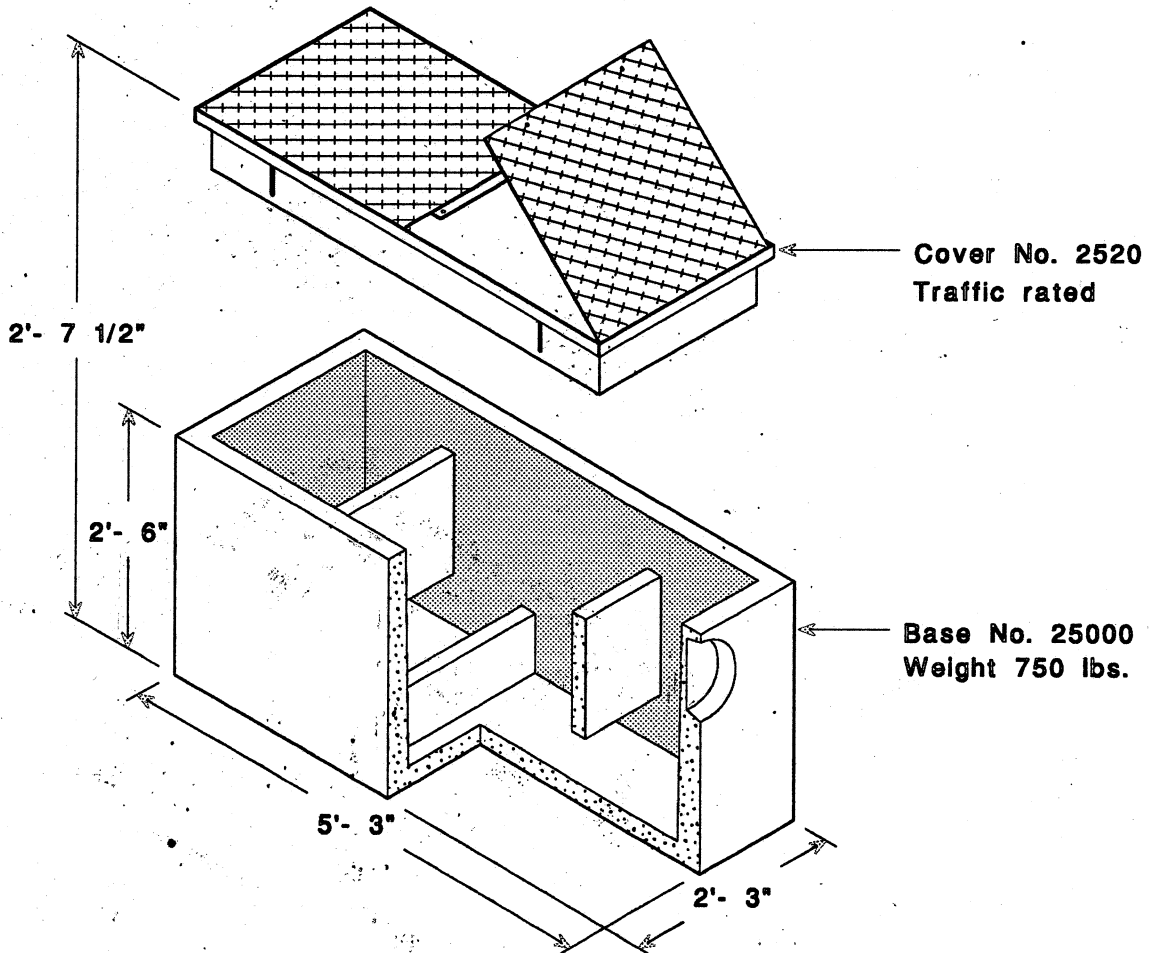


**CONCRETE
PRODUCTS**

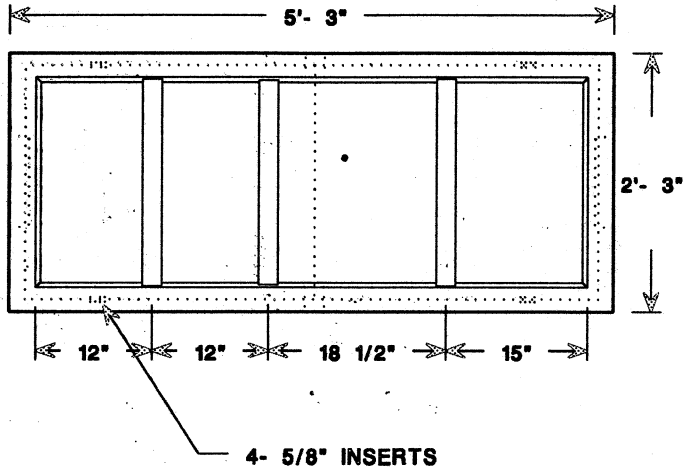
CCP 250 OWS

19604 - 67th Ave NE Arlington, Wa. 98223 Telephone (360) 435-5531 Fax (360) 435-8575

| | W | L | H |
|-------------|----------|----------|------------|
| I.D. | 1'- 10" | 4'- 9" | 2'- 3" |
| O.D. | 2'- 3" | 5'- 3" | 2'- 7 1/2" |



* Limited traffic cover also available. Cover No. 2515



- CONCRETE : 28 DAY COMPRESSIVE STRENGTH $f'_c = 4000$ psi PER ASTM C-33 AND C-150.
- REBAR : ASTM-A615 & A-123 GRADE 60.
- MESH : ASTM A-185 GRADE 88.
- DESIGN : ASTM C-857 "MINIMUM STRUCTURAL DESIGN LOADING FOR UNDERGROUND PRECAST CONCRETE UTILITY STRUCTURES".
- LOAD : H-20 TRUCK WHEEL WITH 30% IMPACT PER AASHTO.
- REINFORCING PLACEMENT : 4x4 / 4 GAUGE THROUGHOUT BASE, #4 BAR IN CORNERS AND EDGES.
- HATCHES : PER DISTRICT REQUIREMENTS.
- JOINT MATERIAL : MEETS FEDERAL SPECS. SS-S-00210, AASHTO M-1988 AND ASTM C990.

